

WEGO



Single-use Receptacles For Human Arterial Blood Specimen Collection

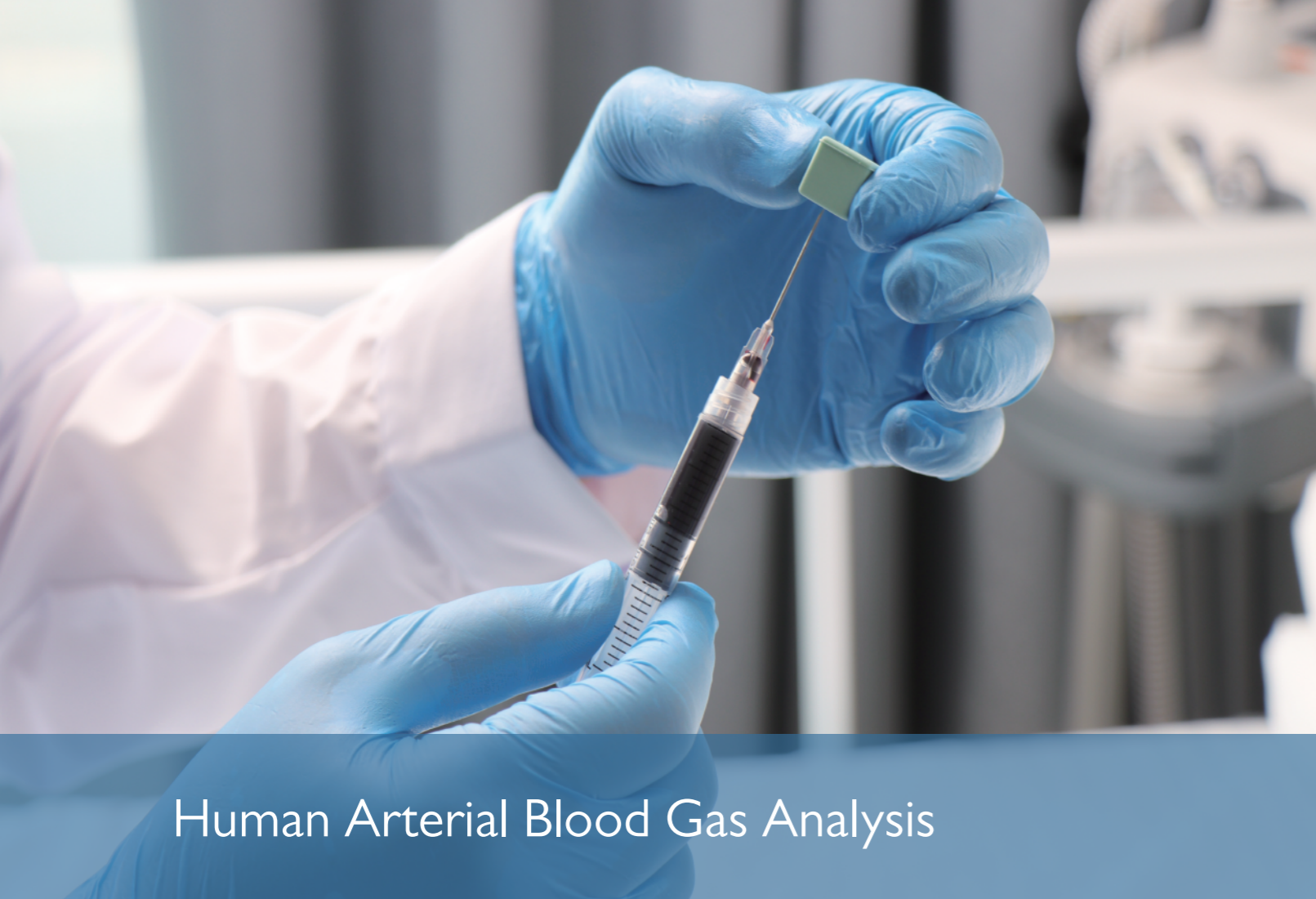


WEIGAO MEDICAL INTERNATIONAL CO., LTD.

ADD: No.1 Weigao Road,Hi-Tech Zone,Weihai,Shandong,China
TEL: +86 631 5660699 FAX: +86 631 5622563 P.C.: 264209
E-mail: info@weigaogroup.com exp@weigaogroup.com
Http: //www.wegomedintl.com/

This copyright belongs to Wego Medical International Co., Ltd. Our company reserves the right to investigate legal liability in case of infringement.

2022.7 EDITION



Human Arterial Blood Gas Analysis

Blood Gas Analysis can provide diagnosis and treatment criterion on respiratory system disease, circulation system disease and metabolic disease by monitoring the items of the arterial blood samples. It can reflect the capability of the body maintaining the internal environment and cell function and of vital importance for patients in monitoring the cardio-pulmonary function during and after the surgeries.

Hypoxaemia is a very common and life-threatening complication for patients. However, it can not be diagnosed or evaluated by analysing clinical symptoms and signs. **BLOOD GAS ANALYSIS** is the only and the most reliable index to make a diagnosis and evaluate the severity of the disease.

ACID-BASE Imbalance is as common as hypoxaemia in treatment for critical diseases. It is very important to make diagnosis and adjust the acid-base imbalance in time during treatment.

Blood Gas Analysis is also the only and the most reliable index to make a diagnosis and evaluate the acid-base balance situation.

What is human arterial blood gas analysis?



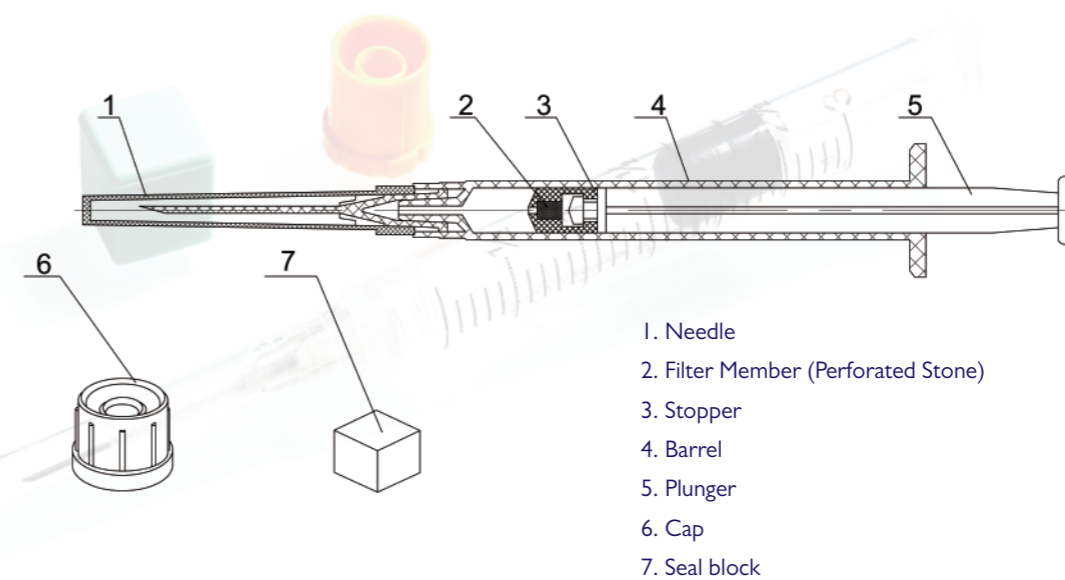
Receptacles for Human Arterial Blood Specimen Collection

Is used on collecting arterial blood specimen for Human Arterial Blood Gas Analysis.

Specification

Needle Size	Max. Volume	Application Scope	Package Size
22GX1" (0.7X25mm)	3ml	Adult radial artery	100
22GX1 1/4" (0.7X32mm)	3ml	Adult femoral artery	100
23GX1" (0.6X25mm)	3ml	Radial artery. Thinner needle, less pain	100
23GX1 1/4" (0.6X32mm)	3ml	Femoral artery. Thinner needle, less pain	100
23GX5/8" (0.6X16mm)	1ml	Children (5-15 years old)	100
25GX5/8" (0.5X16mm)	1ml	Infant	100

Components of Arterial Blood Gas Syringe





Index Influence Blood Gas Analysis

Gas Diffusion

If the blood sample can not be separated from the outer atmosphere completely, the index of PO₂ will increase rapidly resulted in gas diffusion.

Friction Of The Syringe Internal

The friction of the syringe internal surface is relatively large, which means the needle will be easily moved when pulling the plunger outwards of the syringe. This operation is particularly dangerous when collecting arterial blood samples. It may also result in gas diffusion and detection errors.

Interference Caused By Diluted Anticoagulation

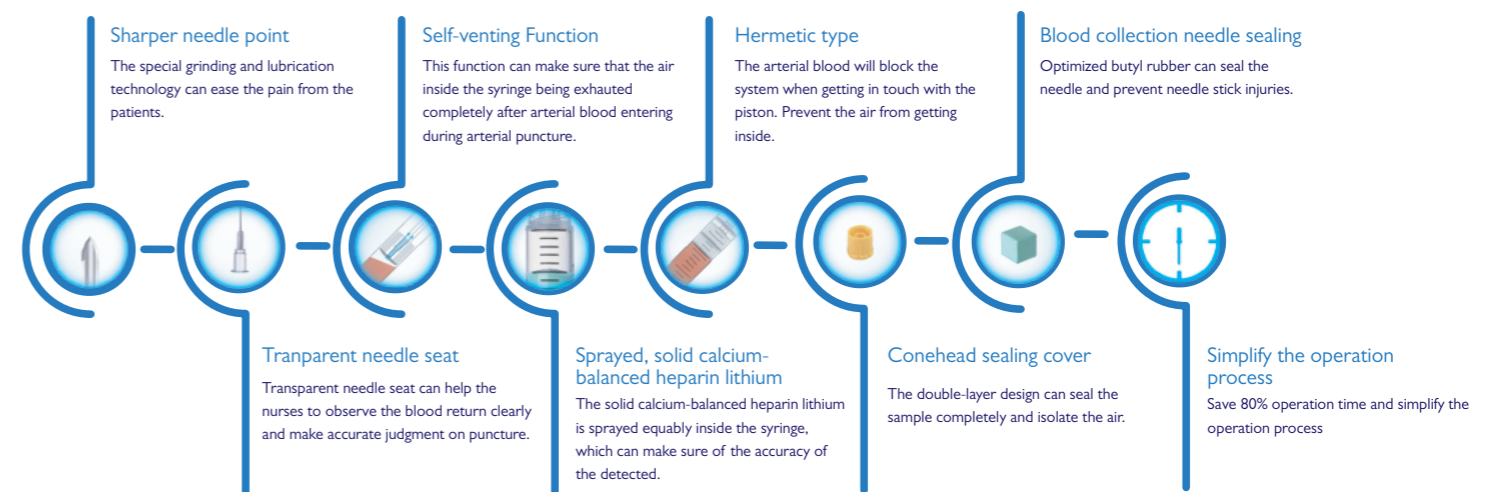
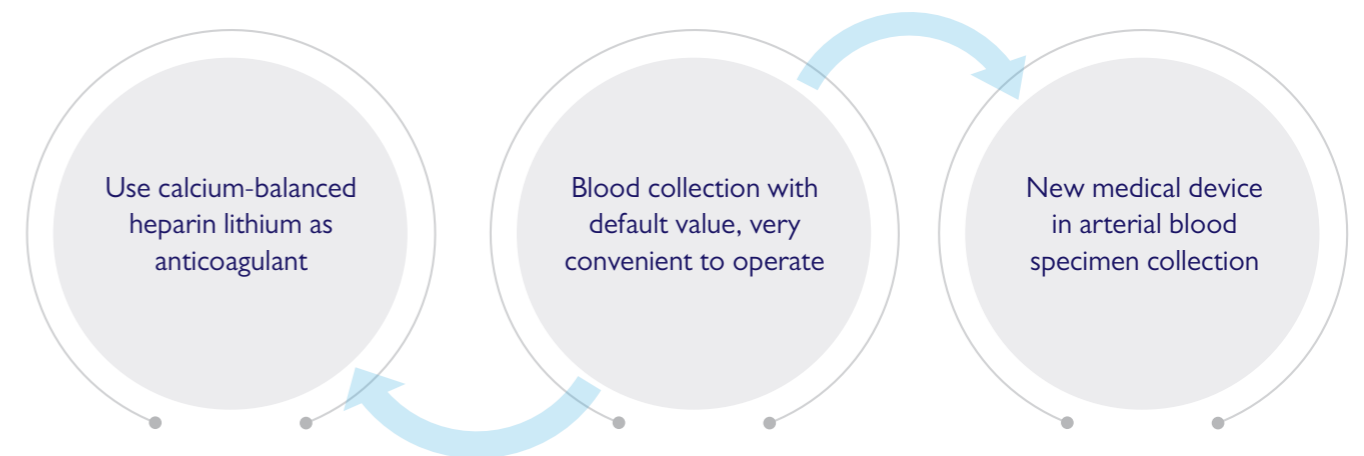
In the past, medical staffs usually take prepared sodium heparin solution as anticoagulant. It can dilute the blood sample and change the value of the index.

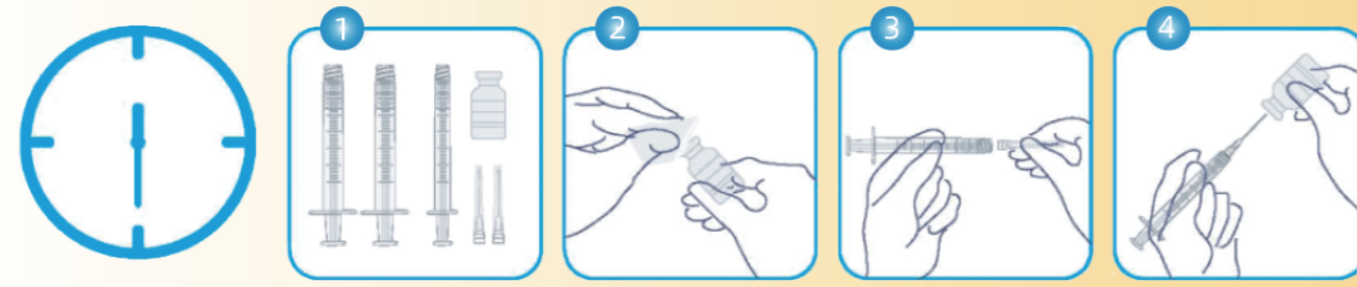
Anticoagulant Effect

The sodium heparin is a kind of biological active reagent. If the blood sample can not be anticoagulated completely within a certain period of time, then clots will form inside the samples and can easily block the automatic machine and influence the detection.



How Can WEGO Receptacles for Human Arterial Blood Specimen Collection HELP US?

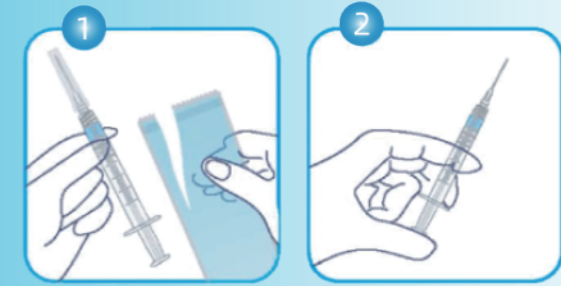




31.91s

80%

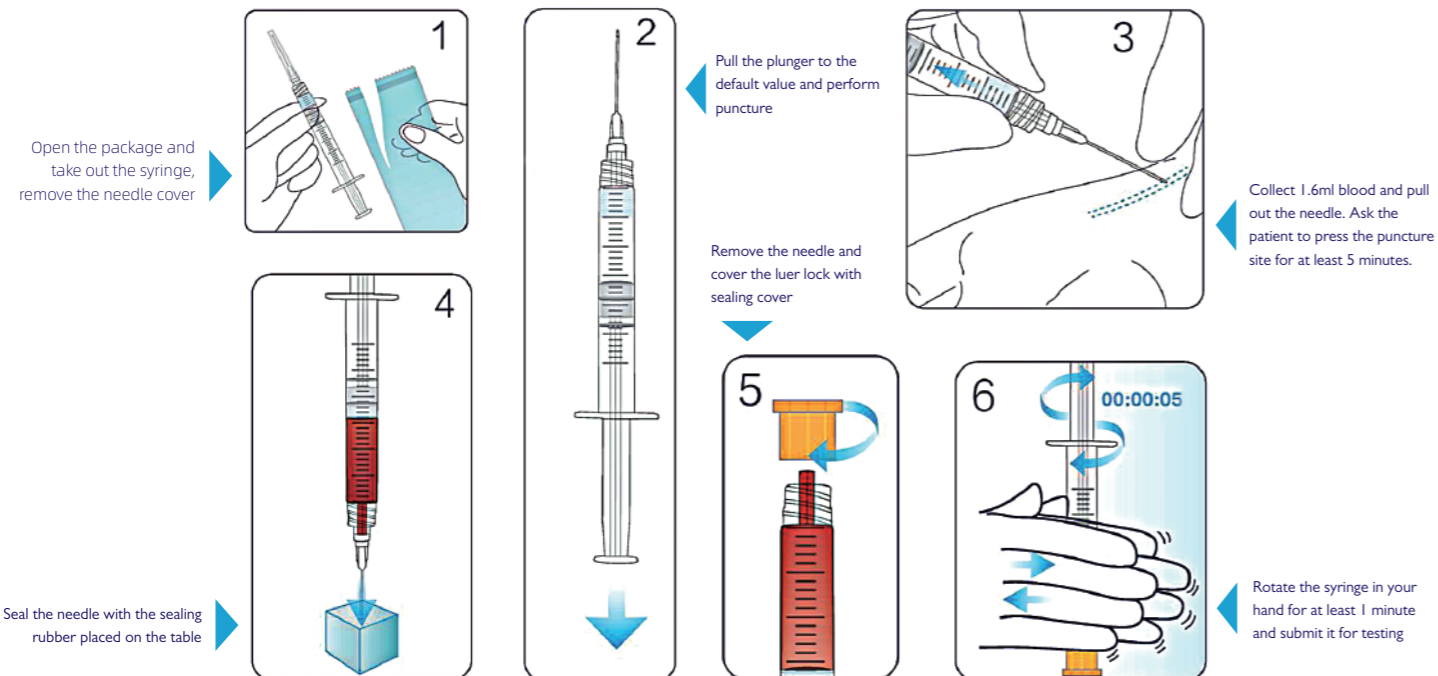
According to the study, the usage of WEGO receptacles for human arterial blood specimen collection can save as much as 80% time on operation.



5.2s

Operation Method

- Specification: 1ml(default value 0.6ml) syringe with 24G(0.55×19mm) needle
- Specification: 3ml(default value 1.6ml) syringe with 22G(0.7×25mm) needle



Applied Department

